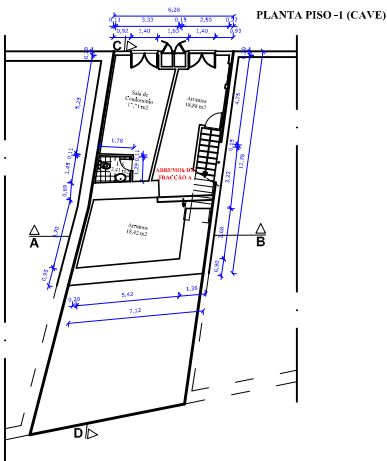
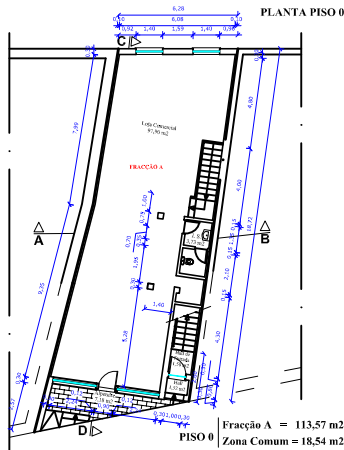


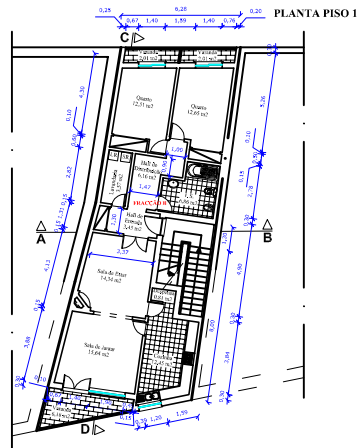
MULTI_SERVIÇOS (2)
"Vila de CÔJA" Const. Nova



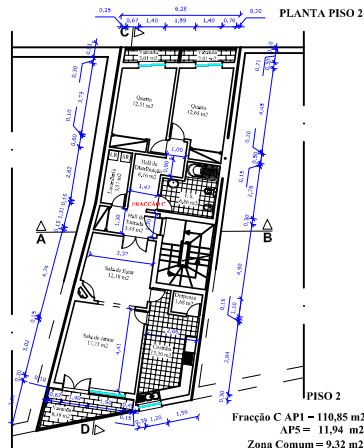
PISO -1 (CAVE)	AP5 = 54,91 m2
	<i>Arrumos do Tirocção A</i>
	Zona Comum – 22,94 m2



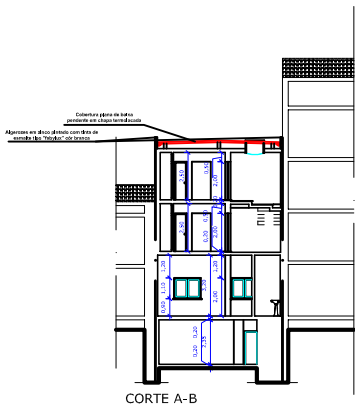
Fracção A = 113,57 m²
Zona Comum = 18,54 m²



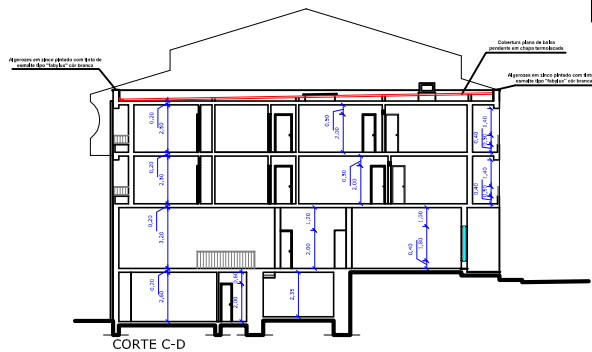
PISO 1
Fracção B AP1 – 109,01 m²
AP5 = 11,94 m²
Zona Comum = 11,16 m²



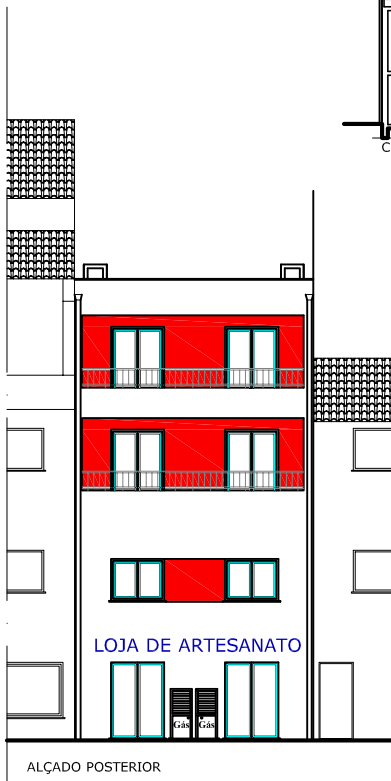
Fracção C AP1 - 110,85 m2
AP5 = 11,94 m2
Zona Comum = 9,32 m2



CORTE A-B



CORTE C-D



ALÇADO POSTERIOR



ALÇADO PRINCIPAL