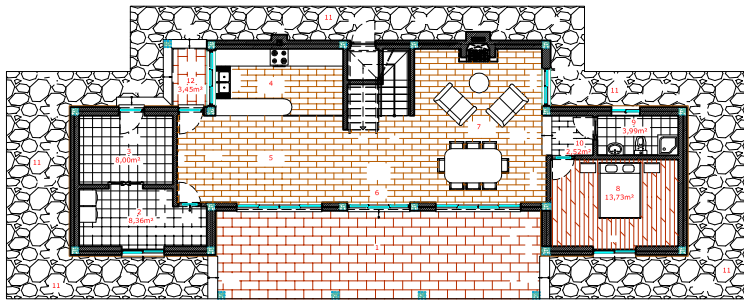


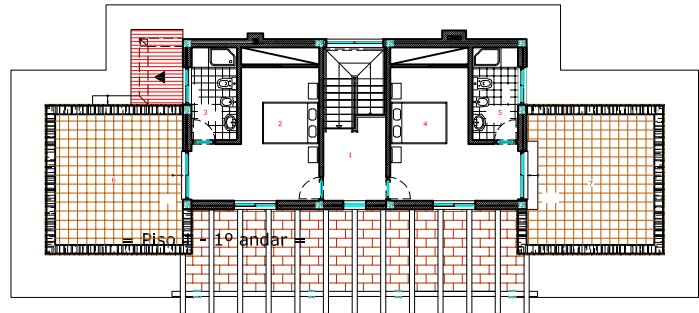
CASA DE XISTO(2) Const. Nova "Quinta das Vinhas"



= Pls 0 - R/Chão =

AP1 - 98,87m²
AP5 - 29,72m²
(Área total) - 128,59m²

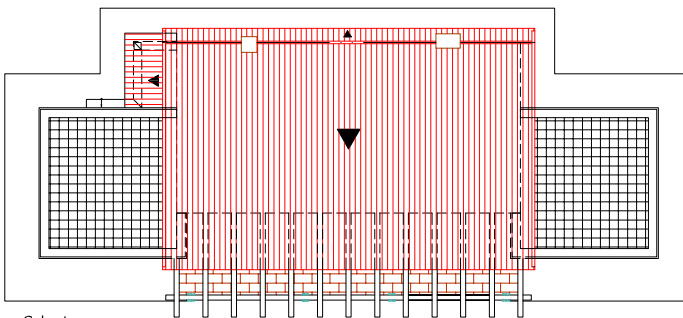
- 1 - Alpendre aberto / Pérgola
- 2 - Lavandaria
- 3 - Casa das máquinas
- 4 - Cozinha
- 5 - Sala de Jantar
- 6 - Hall
- 7 - Sala de Estar
- 8 - Quarto c/ Roupeiro
- 9 - Casa de banho
- 10 - Hall
- 11 - Passeio circundante
- 12 - Alpendre coberto



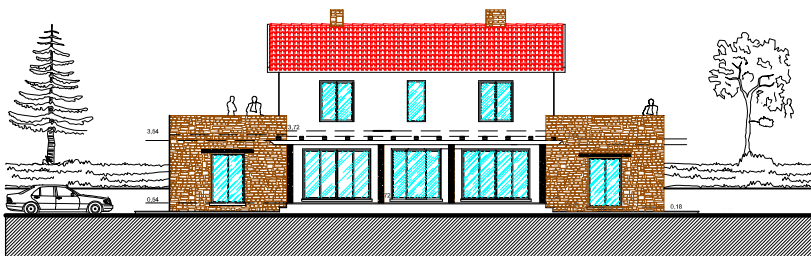
= Pls 1 - 1º andar =

AP1cobert. - 72,60m²

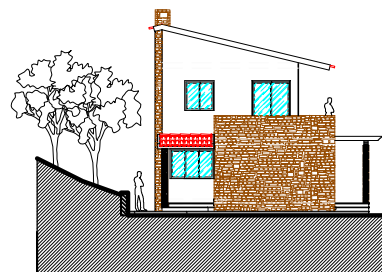
- 1 - Hall do piso 1
- 2 - Quarto
- 3 - Casa de banho
- 4 - Quarto
- 5 - Casa de banho
- 6 - Terraço
- 7 - Terraço



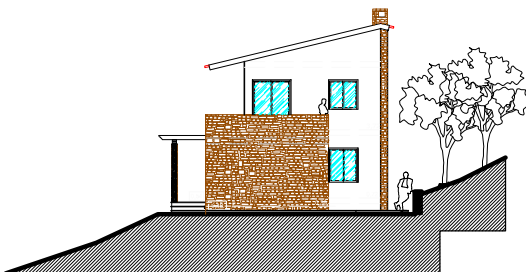
= Cobertura =



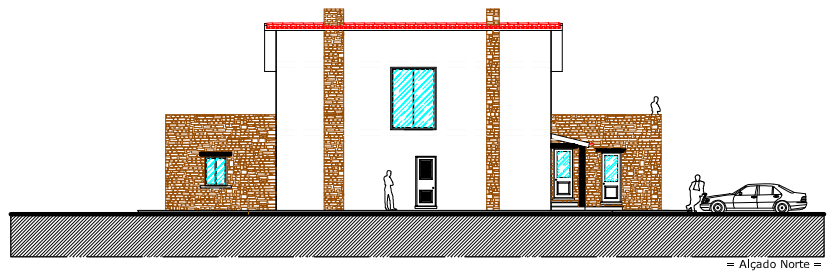
= Alçado Sul =



= Alçado Oeste =



= Alçado Este =



= Alçado Norte =